

We provide Environmental Protection instruments, equipment, systems and engineering solutions for various industries.

提供环保仪器、环保设备、系统和工程解决方案



EURO TECH

欧陆科仪

Company Profile

公司简介

Euro Tech is a premium distributor and manufacturer of high-quality technology instruments as well as an environmental engineering services provider. To meet the environmental needs of the China market, **Euro Tech** is focusing on the environmental protection for air, water and energy, for which the company can supply monitoring instruments, analytical instruments and testing equipment. **Euro Tech's** primary goal is to provide high-quality yet competitively priced instruments and engineering services to the Chinese marketplace.

Euro Tech is headquartered in Hong Kong with eleven other offices located in Beijing, Shanghai, Guangzhou, Chongqing, Xian, Shenyang, Wuhan, Fuzhou, Cheng Du, Qing Dao, Urumqi and one assembly plant located in Pudong, Shanghai.

Shanghai Euro Tech Ltd. was established by Euro Tech (Far East) Ltd. in 1999 as a fully Hong Kong-owned enterprise in Shanghai. We are situated in the Jinqiao Export Processing Zone of Pu Dong, Shanghai. We carry out our own research and development, production, marketing and after sales service and in particular, we are committed to develop modern analytical instruments for laboratories, on-line measurement instrument and analyzing equipment for chemicals. Being innovative is our guiding principle. Thus, on one hand, we introduce overseas technologies into China.

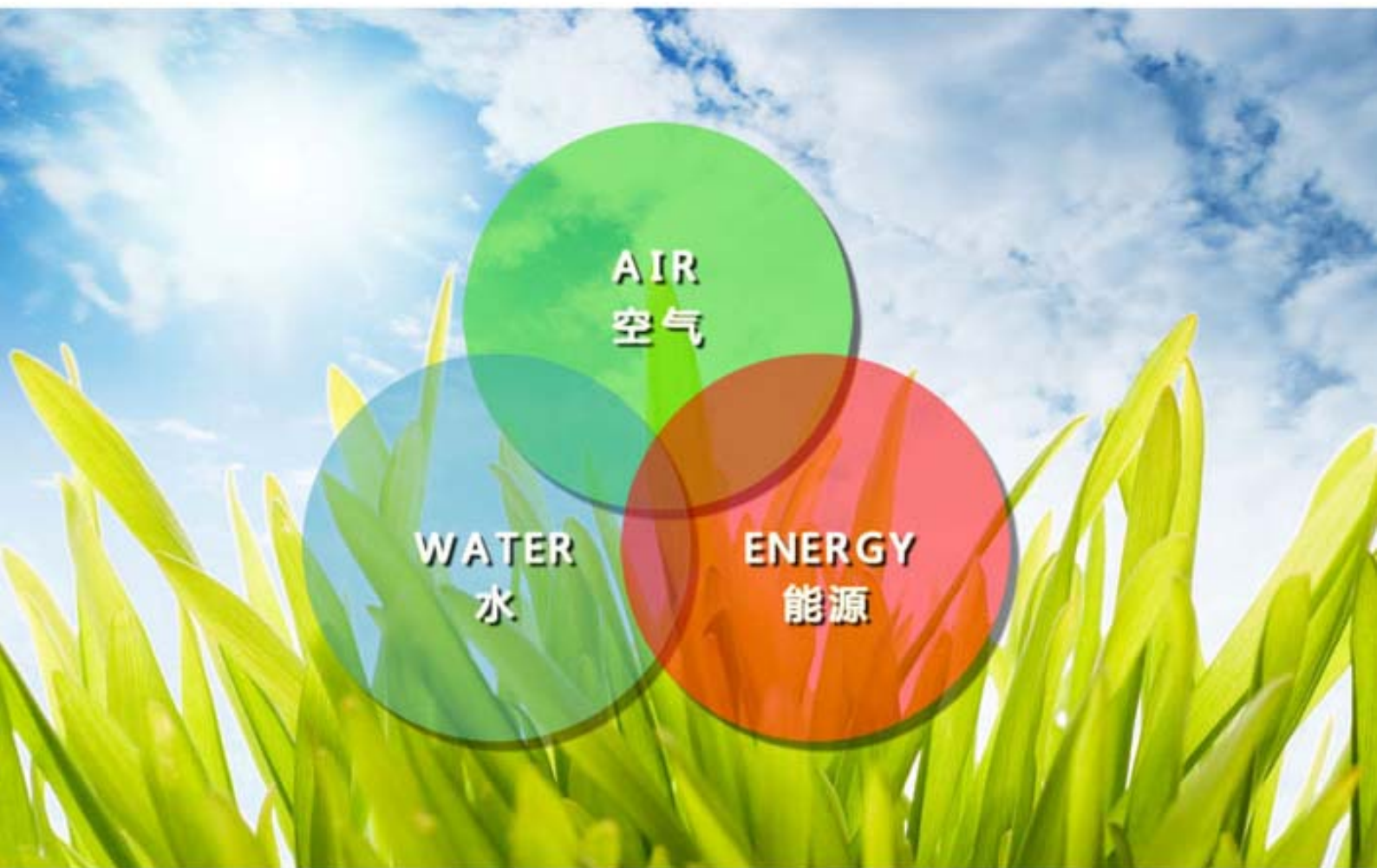
Shanghai Euro Tech Limited has also set the long term target to provide equipment and instrument for the energy conservation sector. Currently, we offer a series of models of flue gas analyzers and power meters.

欧陆科仪以香港为基地,始于1971年,应中国市场所需,我们现正专注于空气、水和能源等方面的环境保护需要。作为分销及生产商,我们不但提供“优质及先进”的环保监测、分析及测试等各种仪器设备,也同时作为一个环境工程服务的公司。

为配合大中华概念的进程,我们已在上海浦东新区自设工厂,开发及生产自己的产品。並先后在北京、上海、广州、重庆、西安、沈阳、武汉、福州、成都、青岛及乌鲁木齐开设办事处,并在全国各省委有分销代理。

上海欧陆科仪有限公司是1999年香港欧陆科仪(远东)有限公司在上海开办的独资企业,公司位于中国上海浦东新区金桥出口加工区,集研发、生产、销售和服务于一体,致力于开发研制现代实验室分析仪器,在线测量仪器和其它化学分析仪器,我们本着创新理念,在引进及吸收国外技术的基础上开发新一代产品。

上海欧陆科仪有限公司在继续拓展水质分析和监测仪器领域的同时,已经将研发和生产服务与节能减排的仪器仪表作为公司发展的长期目标,为此我们已经开发了包括烟气分析仪和电力功率计等一系列产品。



Flue Gas & Dust Monitoring / Measuring Instruments

烟气烟尘监控/测试仪器



ET5101

Automatic Dust and Flue Gas Analyzer
自动烟尘烟气分析仪



ET5100

Flue Gas Emissions Analyzer
烟气排放测定仪



ET3900

Flue Gas Conditioning Unit
烟气预处理器

On-line Monitoring System

在线监测系统

CEMS 监测排放带来益处

伴随着现代工业的发展，大气污染愈来愈受到关注。空气中的各类污染物不仅会造成一系列经济损失，更与人类的健康与整个生态环境息息相关。CEMS 系统应运而生，被普遍用于监测气态污染物浓度与排放总量，是燃烧与排放工艺中必不可少的环节。



CEMS 系统优点

- ❑ 非直接接触气体，监测设备具有更长的使用寿命
- ❑ 进行防腐设计，增加可靠性和延长寿命
- ❑ 合理的工业设计，节省安装空间和降低电耗
- ❑ 具有多点采样功能，更加准确的显示气体含量
- ❑ 探头具有多种安装方式，满足不同客户需求

PPC Air Pollution Control Technologies
PPC大气污染控制技术

Dry ESP 干式静电除尘设备

PPC specializes in maximum efficiency air pollution control equipment using a variety of different technologies. These include wet and dry electrostatic precipitator devices (ESP) for particulate control, Sodium Bicarbonate and Trona injection for acid gas removal, biofilters and biofiltration for VOC and odor control and SCR and SNCR for control of NOx emissions.

The biofilter, bioscrubber and biofiltration products are manufactured for the abatement of odors and the destruction of VOC's. The wet electrostatic precipitator and dry electrostatic precipitator (ESP) are manufactured for opacity control and particulate control of gas streams as well as condensable particulate emissions (mist). ESP technology in conjunction with dry powder injection is designed for flue gas desulfurization and removal of acid gases. The SCR devices enable us to remove CO and NOx before releasing the gases into the atmosphere.

Established in 1967, PPC has completed over 550 successful air pollution and particulate control projects and with over 40 years of experience PPC has been a stable force in the field of electrostatic precipitation. With our manufacturing facilities in Longview Texas, PPC is here to provide all of your air pollution control system needs.

PPC专业制造高效的、基于多种不同技术的大气污染控制设备,包括:利用湿式静电除尘设备和干式静电除尘设备收集排放气体中的固体微细颗粒,使用碳酸氢钠和天然碱注入法脱除酸性气体,采用生物过滤和生物净化方法来控制挥发性有机碳化合物和臭气的排放,使用选择性催化还原系统和选择性非催化还原系统来控制氮氧化合物的排放。

生物过滤设备、生物洗涤设备和生物净化设备是为了消除臭气并且分解挥发性有机碳化合物而设计的。湿法静电除尘系统和干法静电除尘系统是用来控制气流和可凝结固体颗粒排放物(雾气)的透光度和微细颗粒密度的设备。基于静电除尘技术和干式粉末注入技术,我们设计了烟气脱硫设备和酸性气体消除设备,选择性催化还原系统的应用,使得我们可以在气体排放物进入大气之前,将排放物中的一氧化碳和氮氧化物还原。

建于1967年的PPC工业,在世界范围内已经成功地建造了超过550套大气污染控制设备和微细颗粒排放控制设备,超过40年的经验积累,使得PPC在静电除尘领域中具有稳定的技术力量,我们位于德克萨斯州朗维尤市的工厂,随时为您提供您在大气污染控制上所需要的设备。

PPC Air Pollution Control Technologies

PPC大气污染控制技术

Wet ESP 湿式静电除尘设备



SNCR System 选择性非催化还原系统



Trona System 干式酸性气体脱除设备



Water Quality Testing Instruments & Reagents

水质分析仪器及试剂



ET1500 Toxicity Analyzer
毒性分析仪



ET1200 Infrared Photometric Oil Analyzer
红外分光油分析仪



ET1020A TOC Analyzer
总有机碳分析仪



ET1180 Turbidimeter
油度仪



ET1181 Turbidimeter
油度仪



ET3200B Automatic Extractor
自动萃取仪



ET1151 COD Analyzer
COD 分析仪



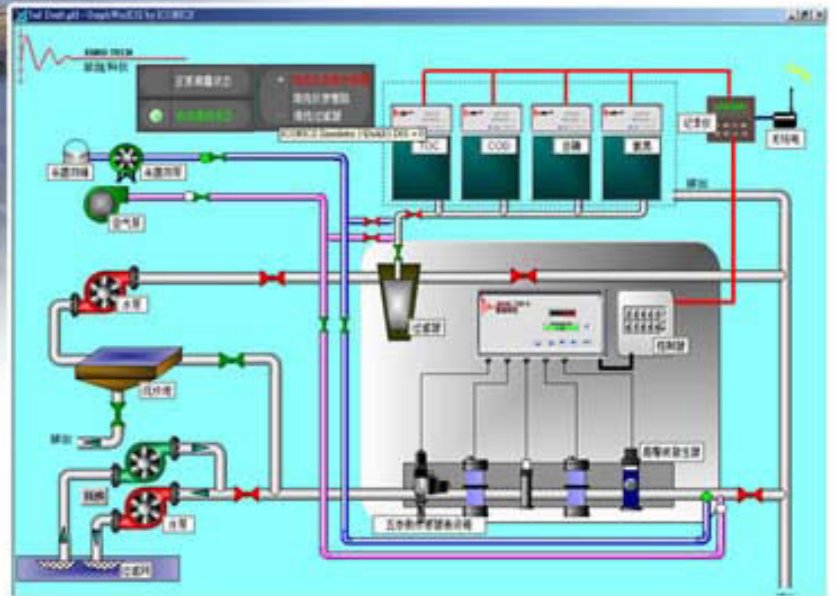
ET3150B Multi-Function Reactor
多功能消解器



Reagents
试剂

On-line Monitoring System

在线监控系统



Water Quality Monitoring System
水质自动监测系统

欧陆科仪的是水质自动监测系统,从设计、生产、安装到维护都是针对不同类型的应用而进行的,如自来水测量、地面水的水质监测、污染源排放监测、污水处理厂监控测量等。

欧陆有广泛的物理、电化学、生化、光学等方面的测量仪器,积累了各种环境和采样条件下的安装和应用在线仪器的经验,可以根据现场情况设计和施工,还可以根据需要和其它生产厂合作,完善用户系统。

Equipment from PACT
沛柯设备
Belt Filter Press
带式压滤机

Dewatering sludge from sewage and industrial waste. A complete line of belt presses including a combined thickening and filtering function. The basic unit consists of coated steel or stainless steel frame, drives, filter belts, tensioning device, deviation adjustor, washing device, scraper and control system.

它将城市和工业污水处理过程中产生的污泥进行脱水,它是一个完全的带式压滤系统包含了污泥增稠和过滤功能的结合,基础单元包括包覆的钢架或不锈钢框架、驱动器、压滤带、张力调整器、离心调节器、清洗装置、刮泥器和控制系统。

Performance of Belt Filter Press

Type of Sludge	Inlet Sludge Dry Solids Content (Inlet DSR)		Sludge Cake Dry Solids Contents (Output DSR)		Capacity Per meter Belt Width (kgDS/hr)	
	With Mixers	With Drum	Min.	Max.	Min.	Max.
Biological waste activated and thickened	0.5-3	3-5	15	20	90	145
Chemical-physical from paper mill	0.5-3	3-5	30	35	205	425
Water softening	0.5-3	3-5	24	28	180	310
Chemical-physical from laundry	0.5-3	3-5	24	30	195	310
Biological from paper mill	0.5-3	3-5	24	28	195	330
Biological from pharmaceuticals	0.5-3	3-5	18	22	135	175
Biological from dairy	0.5-3	3-5	14	18	85	140
Biological stabilized	0.5-3	3-5.5	19	20	135	165
Biological anaerobically digested	0.5-3	3-5.5	24	28	180	270
Biological anaerobically digested	0.5-3	3-5.5	24	28	180	270


Belt Filter Press 带式压滤机

Screen 格栅

Dissolved Air Flotation (DAF) Separators 溶气气浮分离设备

Equipment from PACT
沛柯设备


COMPACT MBR

集澄膜生物反应器

COMPACT membrane modules are submerged directly within the bioreactor. It is typically operated in a considerably different range of parameters for the mean cell residence time and substrate utilization rate than the conventional activated sludge processes. Due to this difference, COMPACT offers several benefits over the conventional activated sludge process.

The modular concept allows for phased construction of wastewater treatment plants and makes it adaptable to a wide range of sizes and flow rates.

COMPACT MBR将东丽优秀的液下平板膜技术集成在独特的模块化设计中,并选用全球顶尖的品牌设备,在有限的集装箱空间内将污水处理站和中水回用系统合二为一,加之享誉业界的全自动化控制技术,实现多项自主创新成果。在物尽其用的设计理念下,污泥的泥龄和基质利用率实现最优化,全面超越传统的活性污泥处理工艺。

COMPACT MBR的设计充分考虑了人性化操作的要求,所有型号的安装只需进水、出水和电气连接,运行维护简便,整套系统处理简洁稳定。

Model 标准型号	COMPACT*50	COMPACT*75	COMPACT*100	COMPACT*150	COMPACT*200
Treatment Capacity(m ³ /day) 处理量(吨/天)	5-50	50-75	75-100	100-150	150-200
Population	25-250	225-375	375-500	500-750	750-1000
Inlet Condition (BOD/SS) 进水参数(BOD/SS)	300mg/L/300mg/L				
Effluent Quality (BOD/SS) 出水参数(BOD/SS)	5mg/L/5mg/L				
Package Dimensions LxWxH 设备尺寸长x宽x高	4.0x2.4x2.4	6.0x2.4x2.4	9.0x2.4x2.4	12.0x2.4x2.4	18.0x2.4x2.4

Power & Energy Management Products

电力能源管理产品



Power Quality Analyzer 电力质量分析仪



ET9300



ET9300A

Power Meter with CO₂ Conversion 碳排放量功率计



Thermo Imager 红外测温仪



Memory Recorder 记录仪

Energy Saving solutions – Steam Trap

能源解决方案-疏水阀

Advantages

- Increased Production
- More Control & heat output
- Elimination of Waterhammer & Enhanced Safety
- Ultimate Reliability
- Minimal Maintenance
- Permant Energy Savings
- Short Paybacks
- Superior product

优势

- 增加生产
- 更多的控制和热输出
- 增强水锤和增强安全
- 最终的可靠性
- 最小维修
- 能耗小
- 短期的赢利回报
- 产品性能优越

Steam Trap Difference

Traps have a revolutionary venturi orifice design, which enable them to perform the job of a steam trap without the need for moving parts. This means that Traps will not wear out and fail.

与其他不同之处

疏水阀有一个革命式的VENTURI(文氏管)型射孔设计。这种设计能够使疏水阀在不需移动部件的情况下就能够执行相同的工作。这意味着疏水阀不会磨损和发生故障。



Cross section of Sapphire Trap

蓝宝石疏水阀的横截面



Before 使用前



After 使用后



Engineering**工程**

Shanghai Euro Tech Environmental Engineering Ltd., has been the main contractor and system integrator of industrial and municipal wastewater and water treatment plants. Specific services provided by the company include automated control system design, the operation and management of various wastewater and water projects.

Quality and reliability are the core corporate value of Euro Tech in our march towards a world-class technology enterprise. As a part of Euro Tech (Far East) Ltd., Shanghai Euro Tech Environmental Engineering Ltd. makes all possible efforts to develop, explore and promote high and advanced technologies in addition to working closely with professionals and our business partners. While wanting to be cutting edge, it is also our ultimate goal to improve Chinese physical environment and make our planet a better place to live.

上海欧陆环境工程有限公司主要从事工业废水、城市污水、工业给水、城市给水工程设计、自动控制系统集成和工程总承包,以及项目管理和维护等业务。

“优质、诚信”是欧陆品牌的核心,“世界一流”是欧陆的工作标准和奋斗目标。上海欧陆环境工程有限公司作为欧陆科仪(远东)有限公司的生力军在不断强化自身、开拓进取、求实创新、探索高科技企业发展之路的同时,与水处理行业的优秀人士及企业积极开展多方面、多层次合作;在发挥自身优势的同时,我们以推动领域技术的发展为己任,以服务社会为天职,不断超越自我,与全球范围内的有识之士携手,一起保护我们赖以生存的地球,为中国的环保事业做出更为杰出的贡献,共同创造更加辉煌的明天。

Job Reference**项目参考****2*300mw**

Yangcheng Power Plant Pure Water Project

阳城电厂锅炉给水项目

**8000m³/d**

Shanxi Jintai Chemical Wastewater Treatment Project

陕西金泰废水处理工程

Retrofit Project for Drainage Service Department in Shengshui

上水石湖墟污水处理厂后级沉淀池监控系统改善工程

Client name: Hong Kong Drainage Service Department

Date: 12.2006

Application: Designed an On-line Monitoring System of using Telemetry & Solar Panel system for data transmission and power supply



客户名称：香港渠务处
日期：12.2006
应用：太阳能供电
无线信号传送



On-line Substations Monitoring

变电站在线监控



Client Name: One of the Hong Kong Power Utilities
Date of Completion: 6.2009
Application: On-line monitoring system for high voltage(400KV) transformers in 10 different substations

客户名称: 香港某电力公司
完工日期: 2009年6月
应用: 设计建设在线测定高伏变压分站





EURO TECH
欧陆科仪

Euro Tech (Far East) Ltd.

Address: 18F, Gee Chang Hong Centre, 65 Wong Chuk Hang Road, Hong Kong

Tel: (852)28140311

Fax: (852)28700479

Email: euro-tech@euro-tech.com

欧陆科仪(远东)有限公司

地址: 香港黄竹坑道65号志昌行中心18楼

电话: (852)28140311

传真: (852)28700479

电邮: euro-tech@euro-tech.com

Shanghai Representative office

Address: Flat D, 21/F., Shanghai East Ocean Centre, 588 Yan An Lu (E), Shanghai, P.R.C.

Post: 20001

Tel: (021)63526406

Fax: (021)63527351

Email: euro-tech.sh@euro-tech.com

上海办事处

地址: 上海市延安东路588号 上海东海商业中心21楼D座

邮编: 20001

电话: (021)63526406

传真: (021)63527351

电邮: euro-tech.sh@euro-tech.com

Shanghai Euro Tech Ltd.

Shanghai Euro Tech Environmental Engineering Ltd.

上海欧陆科仪有限公司

上海欧陆环境工程有限公司

地址: 上海市浦东新区金桥出口加工区金港路501号C幢2F

邮编: 201206

Tel: (021)58347460,(021)61637015

电话: (021)58347460,(021)61637015

Fax: (021)58545673,(021)61637011

传真: (021)58545673,(021)61637011

Email: euro-tech-jq.sh@euro-tech.com

电邮: euro-tech-jq.sh@euro-tech.com

www.euro-tech.com