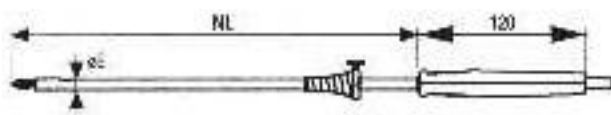


IMR 5000 - GAS-SAMPLING PROBE

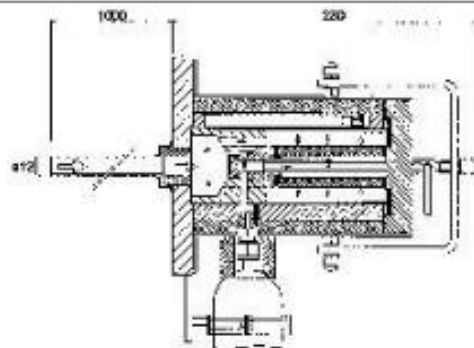
The gas-sampling probe of the IMR 5000 is designed for the continuous sampling of flue-gases and is constantly mounted. The gas-sampling probe comes in different lengths and diameters as well as with different flanges. IMR offers also a special probe with a heated probe head and filter. This special probe can be equipped with a optional insitu pre-filter.



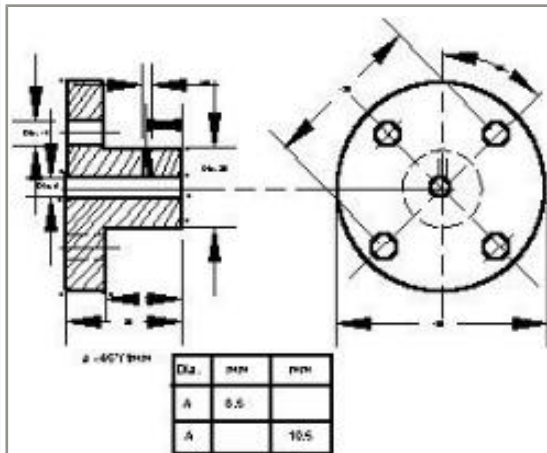
STANDARD - GAS-SAMPLING PROBE



SPECIAL - GAS-SAMPLING PROBE

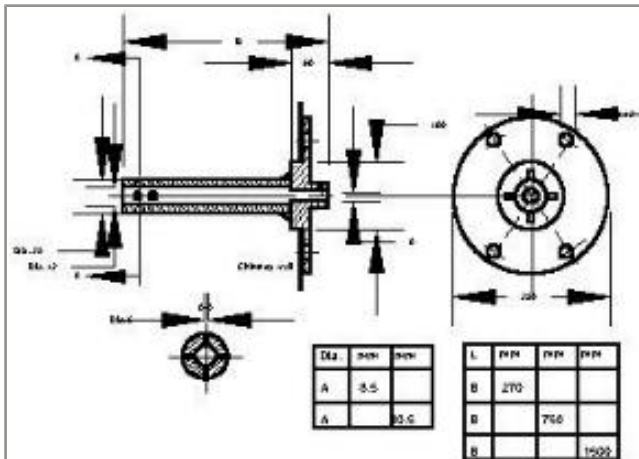


STANDARD-PROBE: FLANGE



STANDARD-PROBE: FLANGE

APPLICATION: HIGH FLUE-GAS VELOCITY



SPECIFICATION

Length

Standard: 270; 750mm; 1500mm; optional lengths available upon request
Special: 1000mm; optional lengths available upon request

Diameter

Standard: 8mm; 10mm
Special: 12mm-22mm

Flange

Standard-probe: standard ; special